

...TÄRTER OCH SERVERAR  
...GNE OCH ANDRA ALKOHOLHÄLTIGA

DUNI

...ERDLOGISKA BÄKVERK, CROISSANTER & KANELBULLAR,  
RAWFOODBÄKVERK mm. ALLA SORTERS EKO-KAFFE OCH  
ANDRA DRICKER SAMT EN HÄLSOSAM & VÄLSMAKANDE  
BURÉ ATT ÄTA PÅ PLATS ELLER TA MED.

I VÅRE DELAR KAN DU TÄMLIGT  
FÖD RÄTTER VÄN NÄR  
ATT ÄTA HÄR ELLER TA



FOODSERVICE 2023



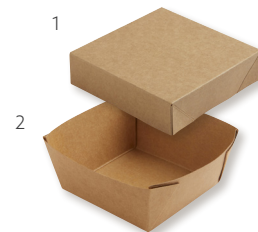
## VIKING

- No need to fold boxes or lids
- Modular, stackable and microwarmable
- Tapered edges ensure great leak-resistance
- Expand when filled for tight-fitting lid



Material: Cardboard/PE max +100°C

No.	Article	Description	Colour	Size (mm) LxWxH	Volume (ml)	Qty/ Cart.
1	188058	Viking Cube Lid	Brown	113x113x29	-	300
2	188057	Viking Cube Low Box	Brown	113x113x50	510	300
3	188056	Viking Cube High Box	Brown	113x113x100	820	300
4	188055	Viking Block Lid	Brown	140x140x29	-	300
5	188054	Viking Block Box	Brown	140x140x75	1200	300
6	188053	Viking Brick Lid	Brown	200x140x30	-	300
7	188052	Viking Brick Box	Brown	200x140x45	1100	300



↑  
ONE LID MATCHES  
BOTH BOXES  
↓



Add a flexible finishing touch. We offer profile printed stickers and adhesive sleeves that enable you to promote your brand on-the-go.

## CARDBOARD/PE BASIC SOUP BOWLS

Material: Cardboard/PE max +100°C  
PP max +100°C



No.	Article	Description	Material	Size(mm) LxWxH	Volume (ml)	Qty/ Cart.
1	201088	Soup Bowl	Cardboard/PE	90x90x62	250	8x50
2	201093	Lid for 201088	PP	95x95x15	-	16x50
3	201090	Soup Bowl	Cardboard/PE	115x115x63	400	10x50
4	201091	Soup Bowl	Cardboard/PE	115x115x77	550	10x50
5	201092	Soup Bowl	Cardboard/PE	115x115x148	950	10x50
6	201094	Lid for 201090/201091/201092	PP	120x120x15	-	10x50





## FIXPACK®

- Sturdy
- Lids fit multiple containers
- Suitable for hot food

Material: APET max +70°C  
PP max +120°C (microwarmable)



No.	Article	Description	Material	Size (mm) LxWxH	Volume (ml)	Qty/ Cart.
1	161088	Dressing Cup	APET	80x80x46	110	20x50
2	161089	Lid for 161088	APET	93x93x9	-	20x50
3	159141	Fixpack® Round	PP	112x112x40	200	14x50
4	159142	Fixpack® Round	PP	112x112x61	300	14x50
5	159143	Lid for 159141/159142	PP	112x112x6	-	14x50
6	159144	Fixpack® Rectangular	PP	146x110x41	350	10x50
7	159145	Fixpack® Rectangular	PP	146x110x54	500	10x50
8	160512	Fixpack® Rectangular	PP	146x110x83	750	10x50
9	159146	Lid for 159144/159145/160512	PP	146x110x6	-	10x50
10	170513	Fixpack® Rectangular with Lid	PP	145x110x110	1000	10x25



1

2



3

4



5



6



7



8



9



10



## DELIPACK

- Round Delipack can be sealed with Duniform® machine DF5.
- Lids fit multiple containers
- Great stackability using lid closure

Material: PP max +100°C (microwarmable)



No.	Article	Description	Size (mm) LxWxH	Volume (ml)	Qty/ Cart.
1	156421*	Delipack Round	101x101x30	125	20x50
2	156422*	Delipack Round	101x101x37	200	20x50
3	156423*	Delipack Round	101x101x48	250	20x50
4	156424*	Delipack Round	101x101x61	300	20x50
5	156426	Lid for 156421-156424	101x101x10	-	20x50
6	156427	Delipack Rectangular	108x82x30	125	20x50
7	156428	Delipack Rectangular	108x82x50	250	20x50
8	156429	Lid for 156427/156428	108x82x10	-	20x50



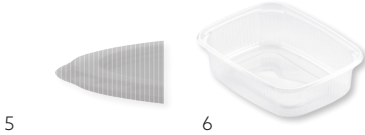
1

2



3

4



5

6



7



8

\*Sealable with the Duniform® machine DF5. Order cassette with article no. 191382.



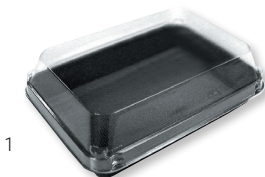
## SUSHI & LUNCH BOXES

- High lid for great food protection
- Hinged lid

Material: PS max +100°C  
PP max +100°C



No.	Article	Description	Colour	Material	Comp	Size (mm) LxWxH	Volume (ml)	Qty/ Cart.
1	170307	Lunch Box	Black/Transparent	PS	1	185x135x54	500	1x200
2	172632	Lunch Box	Black/Transparent	PS	1	270x135x54	750	1x160
3	127806	Lunch Box	Blue/Transparent	PS	1	272x188x53	1100	1x160
4	127803	Lunch Box	White/Transparent	PS	1	338x250x63	1800	1x100



1



2



3



4



**OCTAVIEW®**  
GREAT DESIGN.  
MADE EVEN GREATER.

Passionate about getting every little detail right, we have introduced many subtle refinements to the new Octaview® take-away boxes. These make them even more eye-catching, even more of a pleasure to use, and even more convenient.

► **WATCH THE MOVIE**  
Check out the Octaview movie  
at [duni.com](http://duni.com)



## OCTAVIEW® COLD USE

- Contemporary design language
- Top-quality APET material
- Crystal clear hinged lid
- Secure closing with haptic click
- Smart stack system



Material: APET max +70°C

No.	Article	Description	Comp	Size (mm) LxWxH	Volume (ml)	Qty/ Cart.
1	188018	Octaview® S	1	150x150x70	400	1x400
2	188019	Octaview® M	1	185x185x70	625	1x255
3	188020	Octaview® M+	1	185x185x90	800	1x255
4	188021	Octaview® L	1	225x225x65	925	1x100
5	188022	Octaview® L+	1	225x225x80	1150	1x100





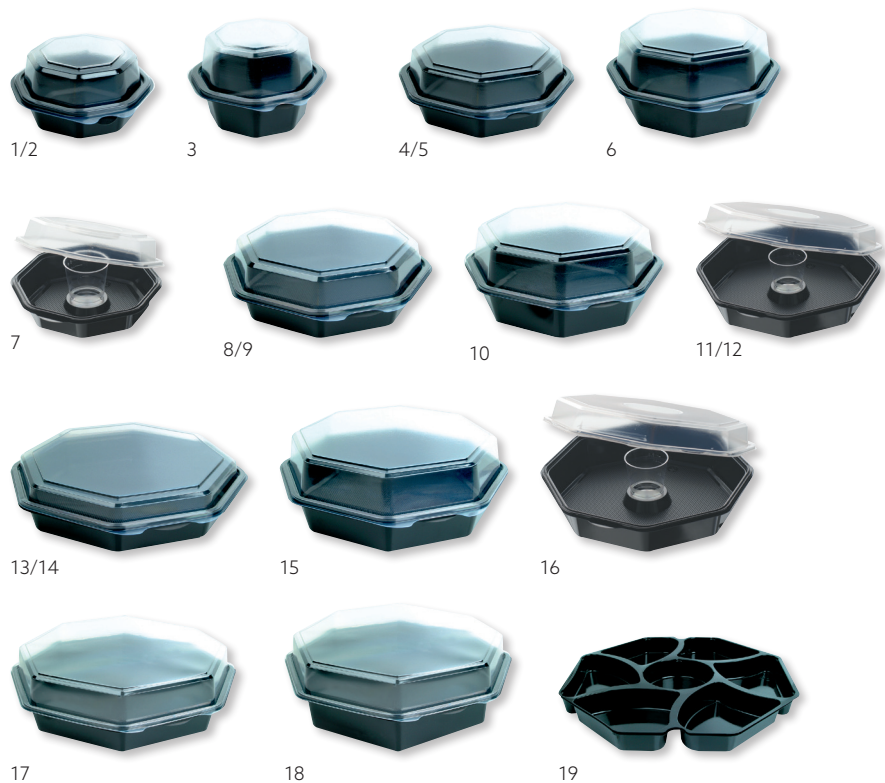
## OCTAVIEW® COLD USE

- Hinged lid
- Tear-off function on selected boxes\*
- Suitable for cold food
- Secure dressing glass in selected boxes



Material: PS max +70°C

No.	Article	Description	Comp	Size (mm) LxWxH	Volume (ml)	Qty/ Cart.
1	<b>866013</b>	Octaview®	1	118x118x60	200	1x375
2	<b>148055</b>	Octaview® (C&C-packed 866013)	1	118x118x60	200	8x35
3	<b>116630</b>	Octaview®	1	118x118x80	265	1x375
4	<b>127765</b>	Octaview®	1	160x160x60	400	1x405
5	<b>163226</b>	Octaview® (C&C-packed 127765)	1	160x160x60	400	9x20
6	<b>127763</b>	Octaview®	1	160x160x80	580	1x405
7	<b>149867</b>	Octaview® with glass	1	160x160x60	450/65	1x360
8	<b>127800</b>	Octaview®*	1	190x190x60	640	1x270
9	<b>157573</b>	Octaview® (C&C-packed 127800)*	1	190x190x60	640	6x35
10	<b>127801</b>	Octaview®*	1	190x190x80	850	1x270
11	<b>157541</b>	Octaview® with glass*	1	190x190x70	950/90	1x240
12	<b>157571</b>	Octaview® (C&C-packed 157541)*	1	190x190x70	950/90	6x35
13	<b>127766</b>	Octaview®*	1	230x230x50	1000	1x190
14	<b>157572</b>	Octaview® (C&C-packed 127766)*	1	230x230x50	1000	4x35
15	<b>127767</b>	Octaview®*	1	230x230x80	1300	1x180
16	<b>149868</b>	Octaview® with glass*	1	230x230x70	1250/65	1x160
17	<b>149873</b>	Octaview®*	1	305x305x60	1800	1x75
18	<b>149874</b>	Octaview®*	1	305x305x80	2500	1x75
19	<b>118846</b>	Octaview® insert for 149873/149874	7	284x284x25	140/6x180	1x150







## OCTAVIEW® & OCTABOWL® HOT USE

- Hinged lid
- Suitable for hot food
- Lids with tear-off function

Material: PS max +100°C  
(microwarmable)



No.	Article	Description	Comp	Size (mm) LxWxH	Volume (ml)	Qty/ Cart.
1	149871	Octaview®	1	160x160x80	580	1x405
2	148049	Octaview® (C&C-packed 149871)	1	160x160x80	580	6x35
3	149864	Octabowl®	1	160x160x72	500	1x405
4	149869	Octaview®	2	190x190x60	350/200	1x290
5	149865	Octabowl®	1	190x190x71	700	1x290
6	163227	Octabowl® (C&C-packed 149865)	1	190x190x71	700	9x20
7	149870	Octaview®	2	230x230x50	580/280	1x170
8	163228	Octaview® (C&C-packed 149870)	2	230x230x50	580/280	5x30
9	149872	Octaview®	3	650/220/220	220/220/650	1x160
10	163229	Octaview® (C&C-packed 149872)	3	650/220/220	220/220/650	5x30
11	149866	Octabowl®	1	230x230x72	1050	1x170

Add a flexible finishing touch: we now offer profile printed stickers & adhesive sleeves that enable you to promote your brand on-the-go.





## DUNI GOURMET® HOT USE

- Suitable for hot food
- Excellent shelf display
- Crystal clear lid

Material: PP max +120°C (microwarmable)  
APET max +70°C



No.	Article	Description	Colour	Material	Size (mm) LxWxH	Volume (ml)	Qty/ Cart.
1	163222	Gourmet® Hot	Black	PP	197x197x33	750	1x450
2	163223	Gourmet® Hot	Black	PP	197x197x44	1x450	
3	159112	Lid for 163222/163223	Transparent	APET	198x198x18	-	1x450



1



2



3



## MEAL BOXES

- Suitable for hot food
- Venting holes in the lid for steam release
- One lid fits all

Material: PP max +120°C (microwarmable)



No.	Article	Description	Colour	Comp	Size (mm) LxWxH	Volume (ml)	Qty/ Cart.
1	<b>161182</b>	Meal Box	Black	1	240x150x40	800	5x50
2	<b>161179</b>	Meal Box	Black	2	240x150x40	500/250	5x50
3	<b>161181</b>	Lid for 161182/161179	Transparent	-	240x150x20	-	5x50



1



2



3



## SOUP BOWLS

- Handles to prevent burned hands

Material: PS max +100°C (microwarmable)

PP/MIN max +120°C (microwarmable)

PP max +120°C (microwarmable)



No.	Article	Description	Colour	Material	Size(mm) LxWxH	Volume (ml)	Qty/ Cart.
1	<b>119573</b>	Soup Bowl	White	PS	149x122x50	275	10x100
2	<b>177907</b>	Bowl	Black	PP/MIN	153x153x45	350	1x480
3	<b>177908</b>	Bowl	Black	PP/MIN	153x153x60	500	1x480
4	<b>177909</b>	Bowl	Black	PP/MIN	153x153x70	650	1x480
5	<b>177910</b>	Lid for 177907-177909	Transparent	PP	159x159x22	-	1x480



1



2



3



4



5

## DESSERT BOWLS

- Superb transparency

Material: PS max +100°C  
APET max +70°C



No.	Article	Description	Material	Size (mm) LxWxH	Volume (ml)	Qty/ Cart.
1	<b>157175</b>	Dessert Bowl	PS	85x85x45	180	20x50
2	<b>157177</b>	Lid for 157175	APET	90x90x10	-	20x50
3	<b>157176</b>	Dessert Bowl	PS	95x95x50	230	20x50
4	<b>157178</b>	Lid for 157176	APET	100x100x10	-	20x50
5	<b>119568</b>	Dessert Bowl	PS	104x104x40	250	20x75
6	<b>118872</b>	Lid for 119568	PS	106x106x14	-	15x100



## DRESSING CUPS

- Superb transparency

Material: PS max +70°C  
APET max +70°C



No.	Article	Description	Colour	Material	Size (mm) LxWxH	Volume (ml)	Qty/ Cart.
1	<b>111267</b>	Dressing Cup	Transparent	PS	47x47x29	30	48x50
2	<b>127762</b>	Lid for 111267	Transparent	PS	50x50x5	-	1x2400
3	<b>161088</b>	Dressing Cup	Transparent	APET	80x80x46	110	20x50
4	<b>161089</b>	Lid for 161088	Transparent	APET	93x93x9	-	20x50



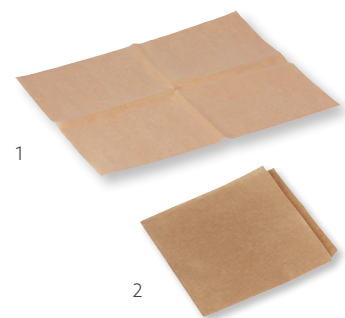
## TAKE-AWAY PAPER AND POCKET

- Trendy
- Convenient on-the-go solution
- Grease resistant

Material: Paper/PE max +70°C



No.	Article	Description	Colour	Size (mm) LxWxH	Qty/ Cart.
1	<b>174728</b>	Sheet paper	Brown	330x410	1x1000
2	<b>174729</b>	Sandwich pocket	Brown	160x160	1x1000





## DUNI AMUSE-BOUCHE®

- Eye-catching design
- Superb transparency

Material: PS max +100°C  
PET max +70°C

No.	Article	Description	Material	Size (mm) LxWxH	Volume (ml)	Qty/ Cart.
1	159721	Square Large	PS	57x57x67	150	6x38
2	157492	Tri	PS	55x55x45	45	6x90
3	159722	Tri Large	PS	62x62x68	110	6x54
4	157497	Organic Puzzle	PS	53x53x45	50	6x100
5	123454	Organic Puzzle Large	PS	64x64x68	125	4x68
6	157491	Square	Ps	47x47x45	60	6x100
7	123457	Taster	PS	75x45x28	25	6x135



7

## DUNI AMUSE-BOUCHE®

- Eye-catching design
- Superb transparency

Material: PS max +100°C

No.	Article	Description	Colour	Material	Size (mm) LxWxH	Volume (ml)	Qty/ Cart.
1	<b>167275</b>	Square Large	Transparent	PS	68x68x70	200	15x45



1

## DUNI AMUSE-BOUCHE®

- Ideal for larger events, value packs simplify handling
- Conveniently packed
- Fits to Duni Amuse-bouche display solutions

Material: PS max +100°C

No.	Article	Description	Colour	Material	Size (mm) LxWxH	Volume (ml)	Qty/ Cart.
1	<b>173025</b>	Square	Transparent	PS	47x47x45	60	40x25
2	<b>173084</b>	Square Large	Transparent	PS	57x57x67	150	24x25



1



2

## DUNI AMUSE-BOUCHE®

- Safe transport
- Modular system
- Perfect for pre-packed offers

Material: Cardboard/PE window max +100°C



No.	Article	Description	Material	Size (mm) LxWxH	Qty/ Cart.
1	<b>165207</b>	Catering Transport Box Small	Cardboard/PE	360x250x80	10x10
2	<b>165206</b>	Catering Transport Box Medium	Cardboard/PE	460x310x80	10x10
3	<b>165205</b>	Catering Transport Box Large	Cardboard/PE	550x365x80	7x10
4	<b>165208</b>	Catering Box Insert Small for 15pc	Cardboard/PE	357x247x30	10x10



1



2



3



4





## TREND GLASSES

Material: PS max +100°C  
APET max +70°C



No.	Article	Description	Material	Volume (ml)	Qty/ Cart.
1	<b>516301</b>	Trend Shotglass	PS	50 (0,02/0,04l)	20x50
2	<b>153396</b>	Trend Glass	PS	250 (0,2l)	20x50
3	<b>153397</b>	Trend Glass	PS	300 (0,25l)	20x50
4	<b>153398</b>	Trend Glass	PS	390 (0,3l)	20x50
5	<b>157175</b>	Insert for 153397/153398	PS	180	20x50
6	<b>153413</b>	Flat Lid (w cross) for 153397/153398	APET	-	10x100
7	<b>157177</b>	Flat Lid for (w/o cross) for 153397/153398	APET	-	20x50
8	<b>169210</b>	Dome Lid (w/o hole) for 153397/153398	APET	-	12x50







## PREMIUM GLASSES

• One-piece glasses – no assembly needed

Material: PS max +100°C

No.	Article	Description	Volume (ml)	Qty/ Cart.
1	<b>155820</b>	Wine Glass (one-piece)	230 (125/175)	6x18
2	<b>120145</b>	Champagne Glass (shrink-wrapped pack)	135 (0,1l)	10x10
3	<b>107002</b>	Champagne Glass (display box)	135 (0,1l)	10x10
4	<b>149147</b>	Diamond Juice Glass	250 (0,2l)	35x30



1



2/3



4





## GLASSES

Material: PS max +100°C  
PP max +120°C

No.	Article	Description	Material	Volume (ml)	Qty/ Cart.
1	<b>127730</b>	Crystallo Coupe Glass	PS	65	85x40
2	<b>127731</b>	Lid for 127730	PS	-	1x3400
3	<b>127724</b>	Crystallo Coupe Glass	PS	260 (0,2l)	24x20
4	<b>111255</b>	Flat Lid for 127724	PS	-	20x100
5	<b>118890</b>	Dome Lid for 127724	PS	-	25x20
6	<b>127726</b>	Crystallo Juice Glass	PS	200 (0,15l)	45x30
7	<b>149149</b>	Tourmaline Juice Glass	PS	240 (0,2l)	25x40
8	<b>127727</b>	Juice Glass	PS	225 (0,15l)	20x40
9	<b>119484</b>	Drinkspout for 127727	PS	-	2x500



## BASIC HYGIENE PACKED GLASSES

Material: PS max +100°C  
PP max +90°C

No.	Article	Description	Material	Volume (ml)	Qty/ Cart.
1	<b>149148</b>	Tourmaline Juice Glass (hygiene packed)	PS	240 (0,2l)	1050x1



1

## FESTIVAL GLASSES

• Flexible material to avoid breakage

Material: PP max +100°C

No.	Article	Description	Volume (ml)	Qty/ Cart.
1	<b>154744</b>	Beer Glass	400 (0,3l)	20x50
2	<b>154745</b>	Beer Glass	500 (0,4l)	20x40
3	<b>154743</b>	Beer Glass	630 (0,4/0,5l)	14x50



1

2

3



## CIRCUIT COFFEE-TO-GO CUPS

- Cost-effective solution for design lovers
- Sizes for every need with matching PS lids
- PE lamination
- Reclosable flip plug prevents leaks

Material: PAP/PE max +100°C  
PS max +100°C



No	Article	Description	Colour	Material	Volume (ml)	Qty/ Cart.
1	<b>181835</b>	Circuit cup	Printed	PAP/PE	120	36x45
2	<b>181836</b>	Circuit cup	Printed	PAP/PE	240	20x40
3	<b>181837</b>	Circuit cup	Printed	PAP/PE	350	16x50
4	<b>163600</b>	Lid for 181835	Transparent	PS	-	10x100
5	<b>181833</b>	Lid for 181855/181836	Black	PS	-	20x40
6	<b>169925</b>	Lid for 181837	Black	PS	-	10x100
7	<b>169923</b>	Lid for 181837	White	PS	-	10x100



## CAFÉ IZZA CUPS

- Matching FSC®-certified napkins available
- Vented lids for steam release

Material: PAP/PE max +100°C  
 PS max +100°C  
 Tissue



No.	Article	Description	Colour	Material	Volume (ml)	Qty/ Cart.
1	168304	Izza Napkin, 3-ply, 24 x 24 cm	Printed	Tissue	-	8x250
2	203005	Dispenser Napkin, 1-ply, 33 x 32 cm	Brown	Tissue	-	6x750
3	170740	Café Izza Black Cup	Printed	PAP/PE	120	36x45
4	170741	Café Izza Black Cup	Printed	PAP/PE	240	20x40
5	170750	Café Izza Black Cup	Printed	PAP/PE	350	16x50
6	171427	Lid for 170741	Black	PS	-	20x40
7	171428	Lid for 170750	Black	PS	-	16x50
8	168867	Napkin Dispenser	Matt Black	Metal	-	-



## COFFEE QUICK CUPS

- Vented lids for steam release

Material: PAP/PE max +100°C  
 PS max +100°C



No.	Article	Description	Colour	Material	Volume (ml)	Qty/ Cart.
1	159920	Coffee Quick Cup	Printed	PAP/PE	120	16x80
2	163517	Coffee Quick Cup	Printed	PAP/PE	200	20x80
3	159921	Coffee Quick Cup	Printed	PAP/PE	240	20x50
4	159922	Coffee Quick Cup	Printed	PAP/PE	350	16x50
5	163600	Lid for 159920	Transparent	PS	-	10x100
6	169922	Lid for 159921	White	PS	-	10x100
7	169923	Lid for 159922/159923	White	PS	-	10x100
8	169924	Lid for 159921	Black	PS	-	10x100
9	169925	Lid for 159922/159923	Black	PS	-	10x100





1

2

## HOT DRINK CUPS

Material: PAP/PE max +100°C  
PS max +100°C

No.	Article	Description	Colour	Material	Volume (ml)	Qty/ Cart.
1	<b>153759</b>	Café Flower Cup with Handle	Printed	PAP/PE	200	20x80
2	<b>778206</b>	Paper Cup with Handle	White	PAP/PE	200	20x80
3	<b>100514</b>	Paper Cup	White	PAP/PE	200	30x75



3

## PLASTIC COFFEE CUPS

Material: PS max +70°C



1

2

No.	Article	Description	Colour	Volume (ml)	Qty/ Cart.
1	<b>153780</b>	Coffee Cup with Handle	White	210	16x50
2	<b>100191</b>	Coffee Cup Combi	White	210	25x80



1

## VENDING PAPER CUPS

Material:  
PAP/PE max +100°C (article 187547)

No.	Article	Description	Colour	Volume (ml)	Qty/ Cart.
1	<b>187547</b>	Cup	White	210	20x50

## VENDING PLASTIC CUPS

Material: PS max +70°C



1

2

3

No.	Article	Description	Colour	Volume (ml)	Qty/ Cart.
1	<b>103539</b>	Wall Dispenser One-O-Matic for Cups 21cl	White/Transparent	-	6x1
2	<b>402500</b>	Cup	White	210	20x100
3	<b>402600</b>	Cup	White	210	20x100



## CONDIMENTS



No.	Article	Description	Size (mm)	Qty/ Cart.
1	121998	Salt/Pepper Cruet set 0,3/3g	50x30x50	1x220
2	163515	Salt/Pepper twinpack 1&0,2g	70x40	1x5000



1



2

## ACCESSORIES



No.	Article	Description	Size (mm)	Qty/ Cart.
1	353830	Dental Stick	50	6x1000
2	778092	Dental Stick	50	3x3000
3	119193	Refreshing Towel Lemon Scented	70x50	1x1000
4	119194	Refreshing Towel	70x50	1x1000
5	142981	Dispenser Box with Refreshing Towels Lemon Scented	70x50	6x250
6	186992	Wet Towel Compostable	60x130	2x250
7	186993	Wet Towel Compostable	50x70	1x1000



1



2



3



4



5



6



7





## COOKING BAGS

- Suitable for sous-vide cooking

Material: PE max +120°C

No.	Article	Description	Colour	Size (mm) LxWxH	Qty/ Cart.
1	162016	Cooking Bag, 1,5l	Transparent	200x300	1x1000
2	162017	Cooking Bag, 2,5l	Transparent	250x350	1x1000
3	162018	Cooking Bag, 6,0l	Transparent	320x450	1x500
4	162019	Cooking Bag, 10,5l	Transparent	350x550	1x500

## PLASTIC, ALUMINIUM FOIL AND DISPENSERS

Material: ALU max +250°C

PE max +100°C

PVC max +100°C



1



2



3



4



5



6



7



8



9



10/11

No.	Article	Description	Material	Size WxL	Qty/ Cart.
1	716000	Pre-perforated Clingfilm (1600pcs)	PVC	30 cm x 480 m	6x1
2	716100	Pre-perforated Clingfilm (1100pcs)	PVC	40 cm x 440 m	6x1
3	716500	Clingfilm in Dispenser Box with Cutter	PVC	30 cm x 300 m	6x1
4	716600	Clingfilm in Dispenser Box with Cutter	PVC	45 cm x 300 m	6x1
5	716610	Refill Clingfilm to Dispenser Box with Cutter	PVC	45 cm x 300 m	3x1
6	716620	Clingfilm in Dispenser Box with Cutter	PE	45 cm x 300 m	6x1
7	717103	Dispenser for Clingfilm & Foil	Steel	45 cm	1x1
8	719200	Foil in Dispenser with Cutter	ALU	30 cm x 150 m	6x1
9	719400	Foil in Dispenser with Cutter	ALU	45 cm x 150 m	6x1
10	719210	Refill Foil to Dispenser Box with Cutter	ALU	30 cm x 150 m	3x1
11	719410	Refill Foil to Dispenser Box with Cutter	ALU	45 cm x 150 m	3x1

## WHAT IS A CARBON FOOTPRINT?

Carbon footprint is used to describe the climate impact of a product over its entire life cycle. A calculation is made based on, e.g. type of material of the product, the energy used in manufacturing, transport, use phase and end-of-life handling.

The carbon footprint should be used with care since it is a simplified study of a complex reality. It does not describe the problem of plastics in the sea or use of chemicals and is dependent on facts like type of energy used and waste handling infrastructure.

A plant-based product may theoretically reach a zero carbon footprint when only renewable energy is used in the chain. A fossil-based plastic does not have this potential.

## PRODUCTS

For packaging material the carbon footprint of the product is consistently lower than for the goods they protect. For plastic products, the transport is typically less than 10% of the overall footprint, also when shipped from China to Europe.

Calculations show that for Duni products for the same use, bagasse and paper products have the lowest carbon footprint.

## RESEARCH BA-

There are numerous studies that calculate the carbon footprint according to the ISO standard ISO 14044. There are databases to give the average findings of these studies. The numbers shown are calculated by an independent partner, South Pole.

**Carbon dioxide emissions from a Duni product life cycle are typically divided into:**



Raw materials manufacturing



Manufacturing of finished product

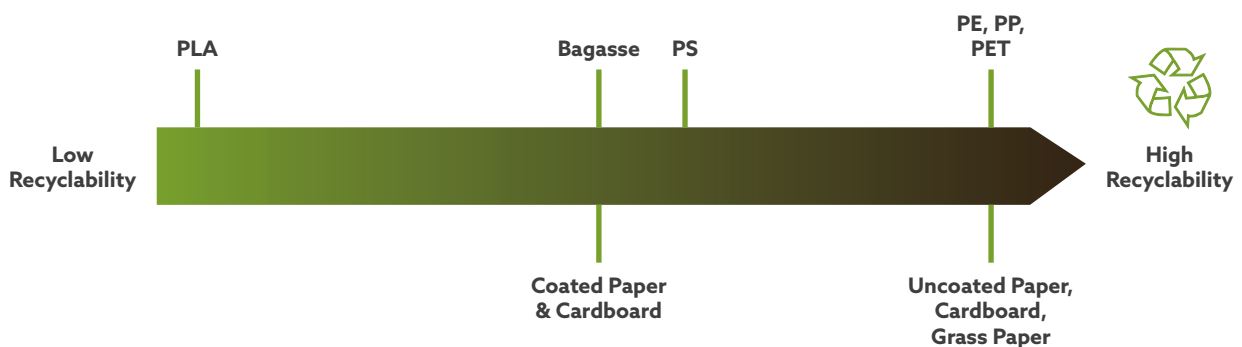


Transport of finished product



Product end-of-life

**Recyclability of Duni materials:**



# DISCOVER OUR CARBON FOOTPRINT TOOL

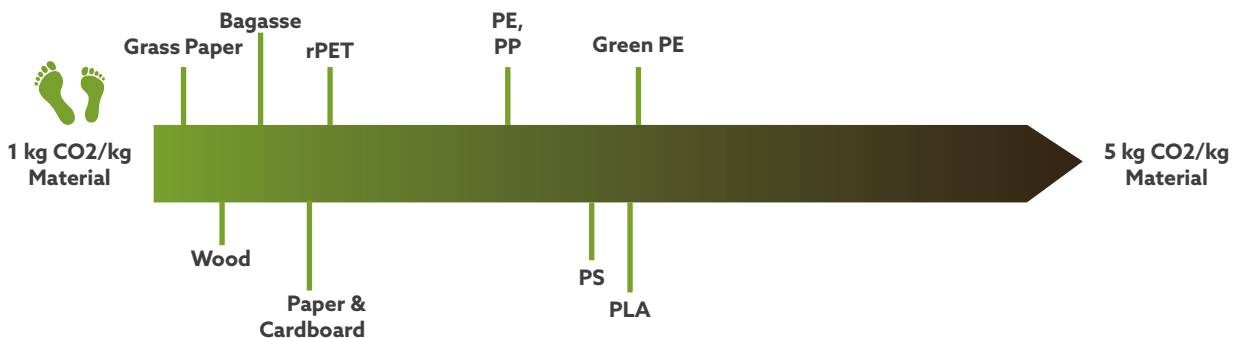
For more than a decade we have been constantly improving our offer of more sustainable packaging, with the goal of lowering our carbon footprint. We are focused on the larger picture of a product's life cycle. Part of the focus will be on developing the material of the product, plant-based alternatives and resource efficiency, for example. The other part of the focus will be on different end-of-life options, composting is an example when it's a relevant alternative. We are constantly looking for new ways to improve and innovate the full life cycle of our products so that the beginning and end of the life cycle are in line with more sustainable solutions.

We help you with the calculation of your carbon footprint for your take-away packaging choice, also considering different end-of-life options depending on different recycling streams in your country.

Get in contact with us if you would like help with figures to be used in communication with your customers.



## Carbon Footprint of Duni materials:





## MATERIALS GUIDE

Different materials suit different needs. This guide will help you to make the right choice for your business.

SYMBOL	NAME	TEMPERATURE*	DESCRIPTION OF MATERIAL	RECYCLING/DISPOSAL
	APET	-40°C to +70°C	Virgin plastic, amorphous poly(ethylene terephthalate)	Recycle as Plastics
		-20°C to +100°C	Cardboard from forest fiber	Recycle as Paper/Carton
	CPET	-40°C to +220°C	Virgin plastic, crystalline poly(ethylene terephthalate)	Recycle as Plastics
	HDPE	-4°C to +100°C	Virgin plastic, polyethene	Recycle as Plastics
	LDPE	-4°C to +100°C	Virgin plastic, polyethene	Recycle as Plastics
	Mineral plastic	-20°C to +120°C	Virgin plastic, polypropene with chalk or talcum	Recycle as Plastics
	PAP (Paper)	-20°C to +100°C	Paper from forest fiber	Recycle as Paper/Carton
	PP	-20°C to +120°C	Virgin plastic, polypropene	Recycle as Plastics
	PS/EPS	-4°C to +100°C	Virgin plastic, polystyrene / expanded polystyrene	Recycle as Plastics

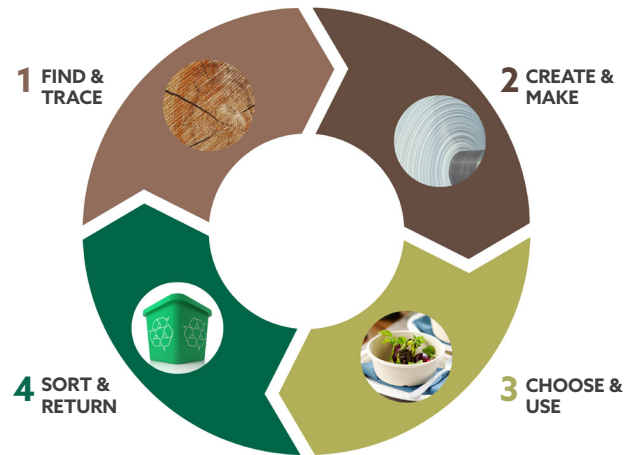
\*Check specific temperature and time recommendation in catalogue

# THE LIFECYCLE OF A DUNI PRODUCT

The life of a Duni product starts with the choice of material. We prefer renewable raw materials from trees and plants, which are responsibly grown and sourced. Leftover materials such as sugarcane fibres or recycled plastics are also a great way to upcycle and save resources.

Conscious convenience is a good reason to choose and use Duni products. We work hard to ensure good working conditions and limited environmental impact at our own and our suppliers' manufacturing sites.

At the end of their life, Duni products should be recycled, composted or incinerated for energy efficiency. Littering is never an alternative and landfill should be avoided. We strive to enable good waste handling alternatives of our products.



## SYMBOLS GUIDE



Designed for optimal stackability.



Leak resistant.



Microwave safe.



Lid or sealing film does not mist up.



Hinged lid tears off easily.



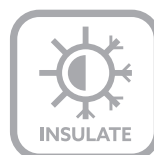
Oven safe.



Can be sealed by a Duniform® machine.



Can be customised with a logo, design or message.



Excellent insulation properties.



DUNI

SUSTAINABLE GOODFOODMOOD

FOR MORE IDEAS AND  
INFORMATION VISIT [DUNI.COM](https://duni.com)

This catalogue is printed  
on FSC®-certified paper.

Duni AB  
P.O. Box 237  
SE-201 22 Malmö  
+46 40 10 62 00  
[info@duni.com](mailto:info@duni.com)